

Phone 815-246-7020
Cell 815-712-1709
Fax 815-246-7045

Brokers
Appraisers
Auctioneers

McConville Realty & Auctioneering

129 West Railroad St. P.O. Box 9
Earlville, IL 60518

www.McConvilleRealty.com

McMichael Farm

60 acres MOL in Section 11 Rutland Twp. LaSalle County, Illinois.

Price: \$ 480,000.00 or \$8,000.00 per acre

Total Acres: 60 MOL 2- 30 acre tracts can be purchased Individually

Soils: Rutland, Elburn, Drummer :

Improvements: None

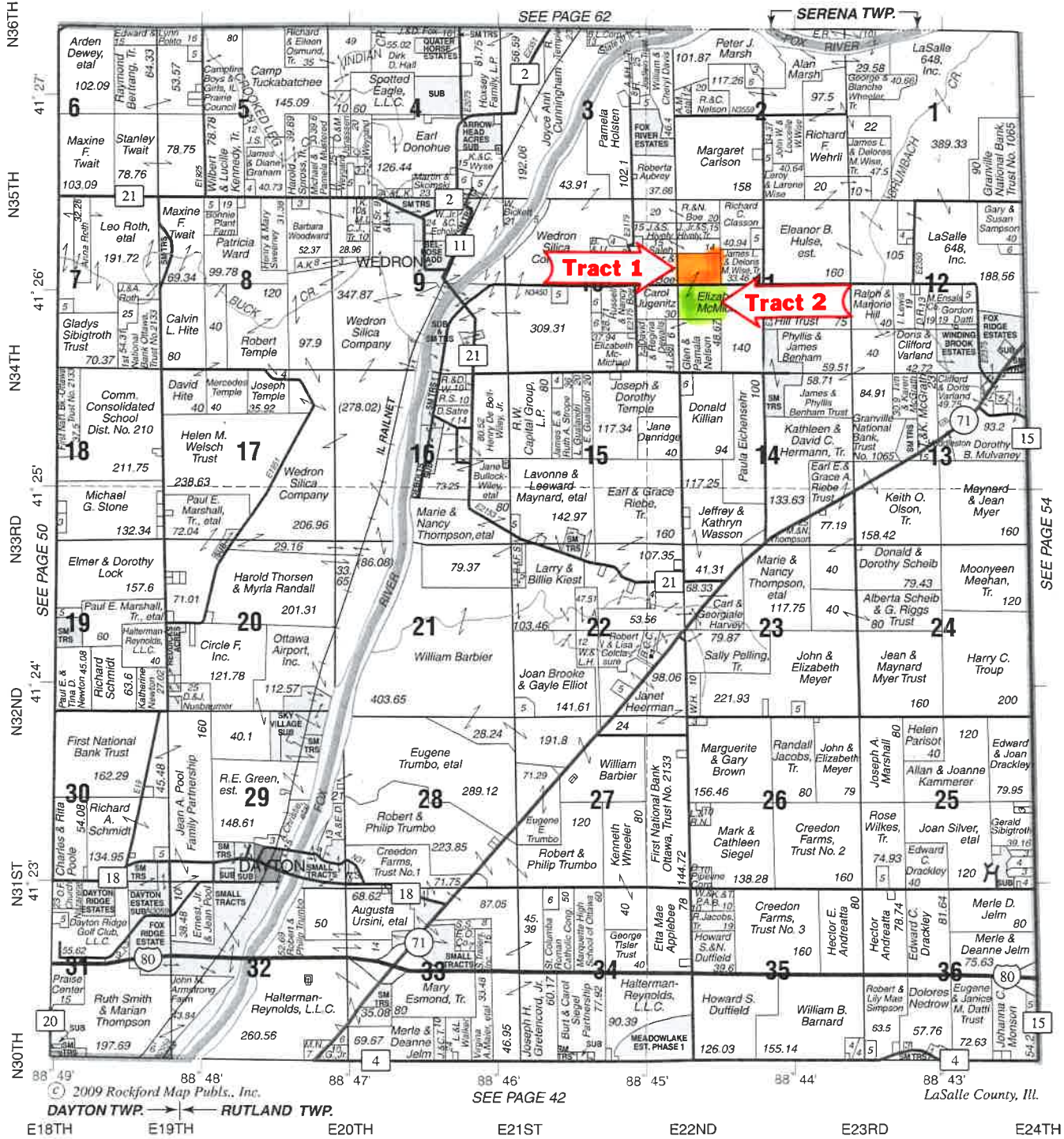
Agent: Marty McConville

Code: 1.5

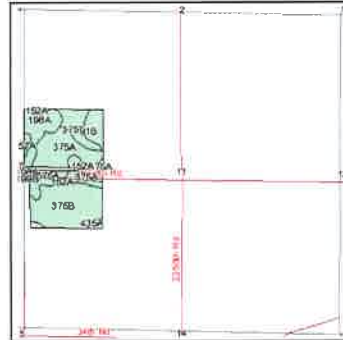
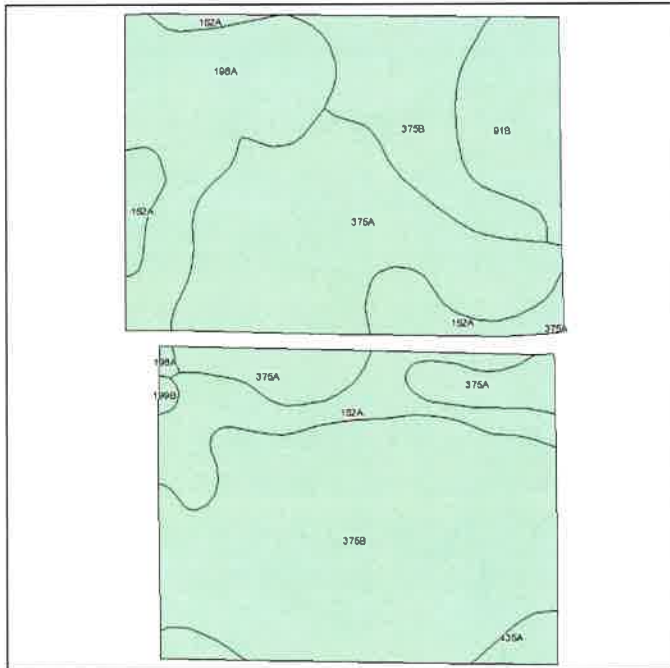
EAST PART DAYTON

CENTRAL PART RUTLAND SOUTH PART SERENA

T.34N.-R.4E.



Soils Map



State: **Illinois**
 County: **La Salle**
 Location: **011-034N-004E**
 Township: **Rutland**
 Acres: **57**
 Date: **8/29/2011**

McConville Realty & Auctioneering



Fsa borders provided by the Farm Service Agency as of May 23, 2008.
 Soils data provided by USDA and NRCS.
 PLSS provided by Illinois State Geological Survey.

Code	Soil Description	Acres	Percent of field	Subsoil rooting ^a	Corn Bu/A	Soybeans Bu/A	Wheat Bu/A	Oats Bu/A ^b	Sorghum ^c Bu/A	Alfalfa ^d hay, T/A	Grass-legume ^e hay, T/A	Crop productivity index for optimum management
**375B	Rutland silty clay loam, 2 to 5 percent slopes	23.7	41.4%	FAV	**178	**57	**70	**96	0	0.00	**5.46	**132
375A	Rutland silty clay loam, 0 to 2 percent slopes	13.9	24.4%	FAV	180	58	71	97	0	0.00	5.52	133
198A	Elburn silt loam, 0 to 2 percent slopes	7.5	13.2%	FAV	197	61	74	94	0	0.00	5.77	143
152A	Drummer silty clay loam, 0 to 2 percent slopes	7.3	12.9%	FAV	195	63	73	100	0	0.00	5.64	144
**91B	Swygert silty clay loam, 2 to 4 percent slopes	3.9	6.8%	UNF	**156	**51	**62	**78	0	0.00	**4.47	**117
435A	Streator silty clay loam, 0 to 2 percent slopes	0.6	1.1%	FAV	177	58	69	92	0	0.00	5.14	131
**199B	Plano silt loam, 2 to 5 percent slopes	0.1	0.2%	FAV	**192	**59	**73	**102	0	**6.95	0.00	**141
Weighted Average					181.7	58.2	70.6	95.2	0	0.01	5.46	134.2

Table: Optimum Crop Productivity Ratings for Illinois Soil by K.R. Olson and J.M. Lang, Office of Research, ACES, University of Illinois at Champaign-Urbana. Version: 1/15/2011 Amended Table S2 B811 (Updated 3/1/2011)

Crop yields and productivity indices for optimum management (B811) are maintained at the following NRES web site:
<http://soilproductivity.nres.illinois.edu/>

** Indexes adjusted for slope and erosion according to Bulletin 811 Table S3

^a UNF = unfavorable; FAV = favorable

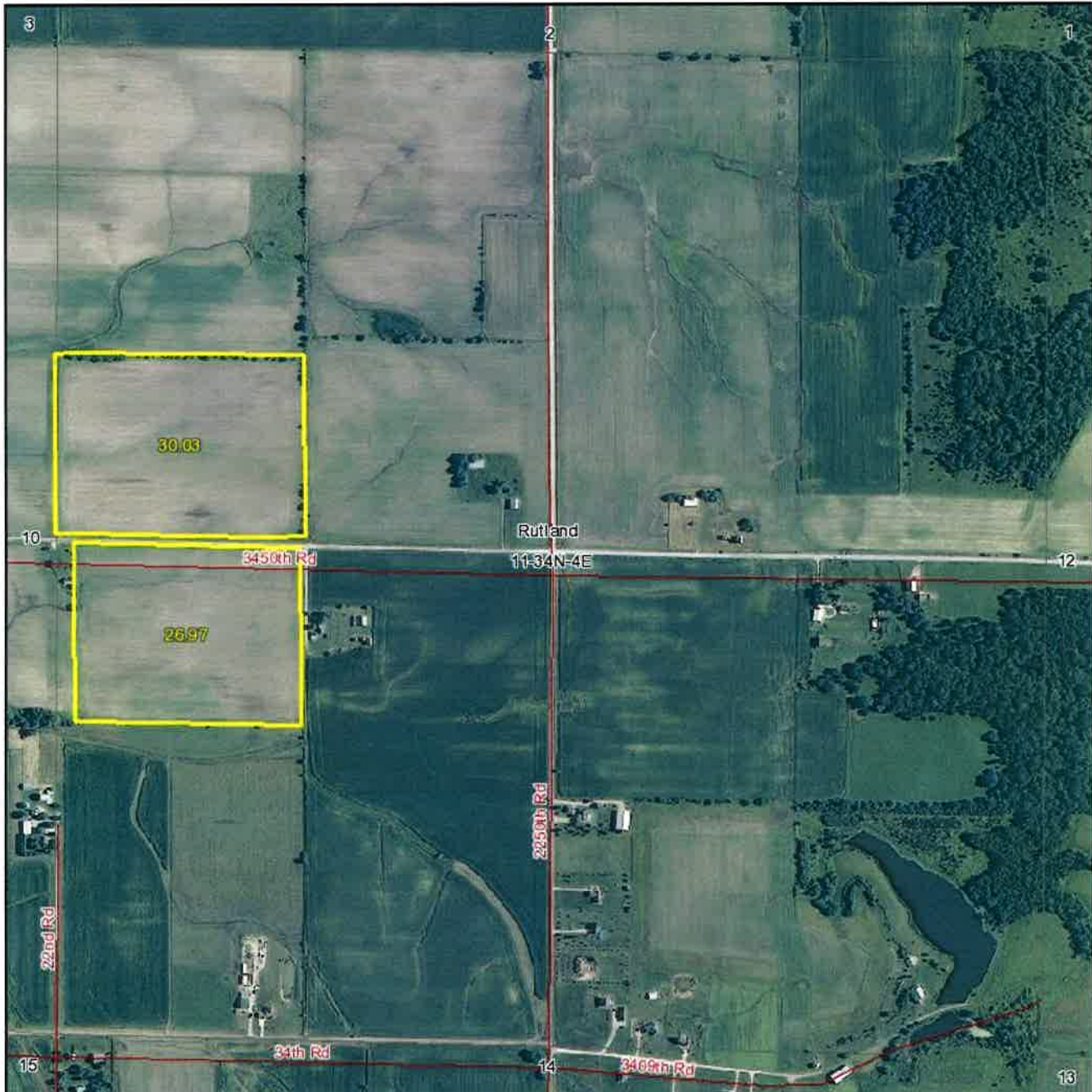
^b Soils in the southern region were not rated for oats and are shown with a zero "0".

^c Soils in the northern region or in both regions were not rated for grain sorghum and are shown with a zero "0".

^d Soils in the poorly drained group were not rated for alfalfa and are shown with a zero "0".

^e Soils in the well drained group were not rated for grass-legume and are shown with a zero "0".

Aerial Map



McConville Realty & Auctioneering

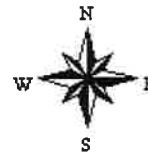
map center: 41° 26' 2.79, 88° 44' 12.32
scale: 10181

Maps provided by:



©AgriData, Inc. 2011
www.AgriDataInc.com

11-34N-4E
La Salle County
Illinois



8/29/2011

Field borders provided by Farm Service Agency as of 5/21/2008. Aerial photography provided by Aerial Photography Field Office. PLSS provided by Illinois State Geological Survey.